



WWW.IMERUSA.COM

POWERED ACCESS LINE

SCISSOR LIFTS, ARTICULATED AND TELESCOPIC TRACKED PLATFORMS





TOLL FREE: 800.275.5463
WWW.IMERUSA.COM



TOGETHER WE BUILD

IMER USA, Inc.
423 Bank Street
Suite 180
Southlake, TX 76092

Tel. (800) 275-5463
Fax (301) 336-6687

www.imerusa.com

Due to our ongoing Research and Development efforts these products and their specifications are subject to change without notice.

The California Office of Environmental Health Hazard Assessment Requires this Specific Warning: Cancer and Reproductive Harm - www.p65warnings.ca.gov



IMER Group is an Italian company founded in 1962, a European leading manufacturer of construction machinery and equipment.

For over 50 years our mission is to provide the construction industry with the highest quality products which reduce operator fatigue and yield higher performance.

The IMER product range covers all the construction site's needs: from production, laying and transport of mortar and concrete to the cutting of materials and surfaces to elevating people and also to earthmoving.

IMER Access, the IMER Group's Access Platforms Division, manages the self-propelled aerial platforms lines for both scissor and articulated boom platforms, and the crawler access platform line.

The IMER Access production plant – with a footprint of almost 4 acres, of which over 50,000 square feet is indoor - is located in Pegognaga (Mantua).

The wide product range is a direct result of years of experience and specific research in the sector acquired in the most selective worldwide markets. The ability to customize the specific equipment of each product category allows us to focus on the market, through the constant improvement of products and processes.

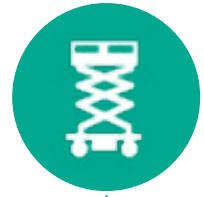
CONTENTS

| | |
|------------------------------------|----|
| IMER Group | 3 |
| IM Scissors | 4 |
| IM 3224 E | 8 |
| IM 3534 E / IM 3540 E | 10 |
| IM 4740 E / IM 4746 E | 12 |
| IM 7043 RT E | 14 |
| IM R Series | 18 |
| IM R 19 | 20 |
| IM R 15 DA | 22 |
| IM R 13 T | 24 |
| Warranty | 26 |
| Parts | 27 |



We build partnerships and collaborations all over the world.





ELECTRIC POWERED

SLAB SCISSOR LIFTS

IMER's Electric Scissor Lifts lead the industry with innovative technologies as a direct result of years of experience, concentrated research, and a goal to provide superior products that deliver unparalleled productivity and safety.

The IMER IM Series includes five models of scissors which all fill a unique void in the market and share innovative technologies while offering a commonality of parts, which simplifies maintenance and improves parts costs and accessibility.

Engineered to be compact and light-weight for easy clearance and maximum versatility. The reduced size, generous capacity, and optimized weight distribution ensure maneuverability in tight spaces with small steering angles. Operators may drive in any position, including at full height, providing superior productivity.

The IM Series scissors ensure the maximum capacity in both the platform and on the manual deck extension. They offer traction and stability at maximum height, even with multiple workers on the fully extended platform.

In addition to the standard features and accessories, IMER Group has developed **IMERVIEW**, a GPS system which makes it possible to monitor and/or control aerial machines remotely in real time.



PRODUCT RANGE

[SERIES IM 3224 E](#)

[SERIES IM 3534 E](#)

[SERIES IM 3540 E](#)

[SERIES IM 4740 E](#)

[SERIES IM 4746 E](#)

STANDARD EQUIPMENT

- ANSI 92.20 / CSA / CE & EN280 approved
- Electric front wheel drive motors
- Negative electromagnetic parking brakes with electric disengagement
- 90° steering
- Manual deck extension (holds two + people)
- Manual emergency lowering device
- Cylinder holding valve
- Heavy duty traction batteries
- Battery charger with automatic switch-off
- Audible motion alarm, horn, hour meter
- Tilt meter with motion cut out and alarms
- Mechanical wheel drive release for emergency hauling
- Cushioned non-marking tires
- Electrical scissor protection
- Pothole protection
- Battery control system with low-voltage cut-out protection
- Fast action foldable railings
- Platform weight management
- AC power to platform
- Flashing beacon
- Proportional controls with diagnostics

UNMATCHED PLATFORM SIZE & EXTENSION

The remarkable size and length of the platform and the extension provides increased performance. Support multiple workers and tools on the extended platform - extending further than competitive lifts.



The **SERIES IM** scissor lifts are the ideal solution in the cases requiring:

- **Extended upward and outward reaching**
- **High productivity - multiple workers**
- **Hard-to-reach spaces**
- **Indoor use** - industrial logistics, maintenance, construction - plumbing, electrical, and HVAC installation



PERFORMANCE VERSATILITY

Work and drive safely from any position, including full height. Offering 3 speeds to maximize performance.



ANSI A92.20, CSA & CE - EN280 COMPLIANCE

Every IM Series Scissor Model conforms to the European Standard safety requirements directed by the EN280, Canadian Standards Association (CSA), and the American National Standards Institute (ANSI) standards - receiving the EN280 marking and ANSI 92.20 approval.



STANDARD SAFETY FEATURES

Every IM Series Scissor Model is built for operator safety and includes multiple safety features such as; a tilt meter with motion cut out and alarms, an overload sensor, a flashing beacon, and a manual emergency lowering device.



ONE-HAND INTUITIVE CONTROL

Sturdy, simple and intuitive control box on the platform allows for a smooth operation from any rail position or on the ground - removable for ground control operations. The interchangeable control box can be used on any IM Series Scissor lifts.



C5 BATTERY MORE POWER

Securely protected high capacity batteries and the electric front-wheel-drive motor boosts your productivity with longer runtimes. Built around C5 technology means more amperage and torque to drive motors which enables driving, stopping and starting on a steep grade.



POTHOLE PROTECTION

Every IM Series Scissor Model provides a pothole protective undercarriage to stabilize the scissor and protect the operator. The cushioned non-marking tires continue to roll without interruption over potholes.

SUPERIOR MOBILITY

Narrow platforms and foldable guardrails allow for easy access through standard doorways and narrow aisles. The shorter wheelbase allows for a tighter turning radius for exceptional maneuverability.



HEAVY-DUTY FOLDING GUARDRAILS

All IM Series Scissors offer heavy-duty tubular foldable guardrails. The circular design provides more stability and strength than a square rail design.

NARROW FRAME & PLATFORM

Not only are all IM Series Scissors compact and narrow for maximum mobility, the undercarriages offer a protective metal cover to stop debris from lodging and slowing operation.



EXCEPTIONAL ACCESSIBILITY

Designed with full 90° steering capability, to move easily in tight spaces, plus easy serviceability without removing motor.



ELECTRIC SCISSOR LIFTS

Series IM 32

STANDARD EQUIPMENT

- Manual deck extension (holds two people)
- Electric traction on the front wheels
- Negative electromagnetic parking brakes with electric disengagement
- 90° wheel steering
- Manual deck extension of 39½"
- Manual emergency lowering
- Non-return valve on lifting cylinders
- Traction batteries 24V-185Ah (c5)
- Battery charger with automatic cut-off
- All movement alarm, horn, hour meter
- Tilt meter with motion cut-out and alarm
- Mechanical release for emergency hauling
- Solid rubber non-marking tires
- Electric scissor protection
- Pot Hole protection
- Battery level control with low voltage protection
- Foldable guardrails
- Platform weight management
- ANSI 92.20 / CSA / CE & EN280 approved
- AC power to platform
- Flashing beacon
- Proportional controls with diagnostics



IM 3224

OPTIONAL EQUIPMENT

- 120 V cable with plug, socket and safety cut-out (standard for US Models)
- Kit for additional flashing beacon
- Compressed air line at the platform
- Gel battery IM 32 series



Easy to access standard hydraulic power pack with dual intake and output filters



Driveable at full height and fully extended



Manual deck extension of 39"

INDOOR USE



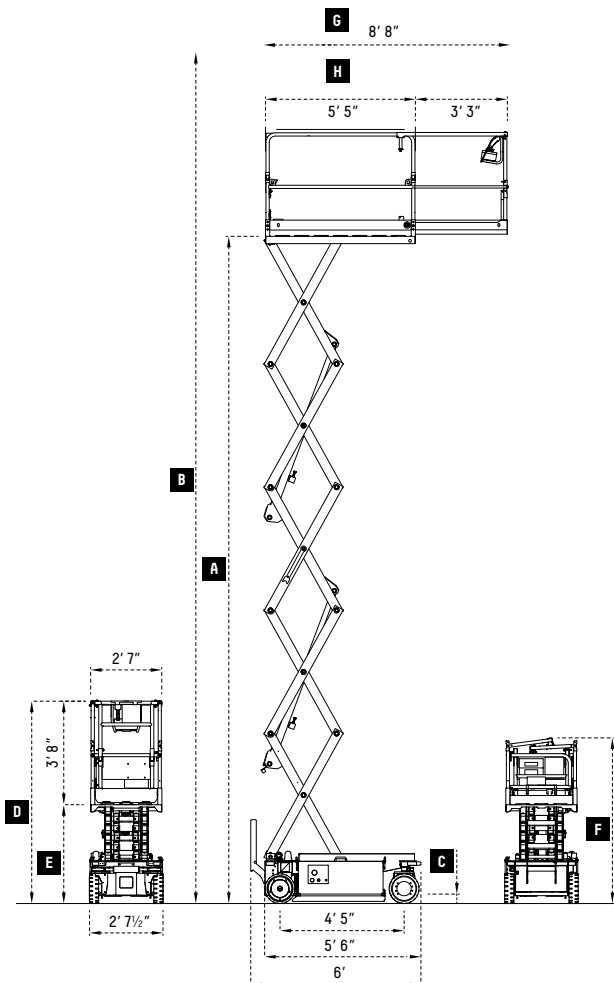
Foldable guardrails allow for easy access through standard doorways



39"
deck extension



extension supports
2 workers



| IM 32 | IM 3224 E (7380) | | | |
|---|------------------|-----------|---------|-----------|
| A Platform Height | ft | 23' 7½" | mm | 7200 |
| B Working Height | ft | 30' | mm | 9200 |
| C (Pot-hole raised/lowered) | inch | 3.5" / 1" | mm | 90/22 |
| D Height Stowed | ft | 7' 2" | mm | 2200 |
| E Height (ground to platform bottom) | ft | 3' 6" | mm | 1080 |
| F Height Storage (with guardrails) | ft | 5' 11" | mm | 1800 |
| G Platform length - extended | ft | 8' 8" | mm | 2630 |
| H Platform length | ft | 5' 5" | mm | 1630 |
| Extension platform length | ft | 3' 3" | mm | 990 |
| Capacity / number of people | lb / # | 510 / 2 | kg / # | 231 / 2 |
| Electric drive motors | V / HP | 24 / 3.2 | V / kW | 24 / 2.4 |
| Lifting power pack - hydraulic type | V / HP | 24 / 2.8 | V / kW | 24 / 2.1 |
| Lifting / Lowering time (loaded) | sec | 36 / 35 | sec | 36 / 35 |
| Battery (traction battery) C5 | V / Ah | 24 / 185 | V / Ah | 24 / 185 |
| Battery charger | V / A | 24 / 20A | V / A | 24 / 20A |
| Hydraulic tank capacity | gal | 1.8 | l | 7 |
| Ground pressure - full load / per wheel | psi | 287/250 | psi | 287/250 |
| Drive speed | mp / h | 2.5 | km / h | 4 |
| Safety traction | mp / h | 0.4 | km / h | 0.6 |
| Gradeability | % | 25 | % | 25 |
| Internal steering radius | ft | 0 | m | 0 |
| External steering radius | ft | 5' 7" | m | 1.7 |
| Tire size (wheel dimension) | inch | 13" x 4" | mm | 325 x 100 |
| Wheel type | cushion | | cushion | |
| Max side/longitudinal tilt angle | degrees | 1.5 / 2.5 | degrees | 1.5 / 2.5 |
| Total weight | lb | 4045 | kg | 1835 |

ELECTRIC SCISSOR LIFTS

Series IM 35



39'
working height

IM 3534



46'
working height

IM 3540

OPTIONAL EQUIPMENT

- 120 V cable with plug, socket and safety cut-out (standard for US Models)
- Gel battery IM 35 series
- Additional flashing beacon kit
- Compressed air line



Standard manual emergency lowering device



Standard negative electromagnetic parking brakes with electric disengagement

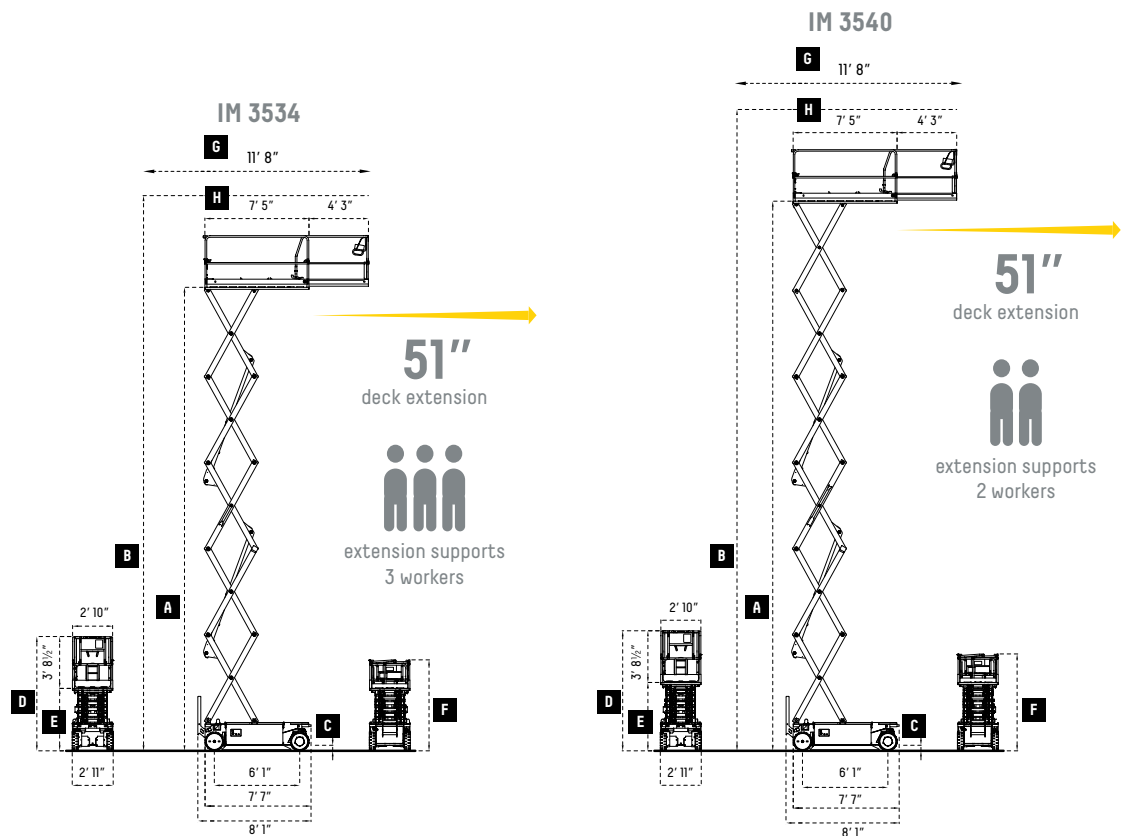


New design of the chassis allows easy cleaning and ensures protection to the components

INDOOR USE



35"
total width



| IM 35 | IM 3534 E (10090) | | | | IM 3540 E (12090) | | | |
|---|-------------------|------------|---------|-----------|-------------------|------------|---------|-----------|
| A Platform Height | ft | 32' 9 1/4" | mm | 10000 | ft | 39' 4 1/2" | mm | 12000 |
| B Working Height | ft | 39' 4 1/2" | mm | 12000 | ft | 45' 11" | mm | 14000 |
| C (Pot-hole raised/lowered) | inch | 4.8 / 1 | mm | 123 / 24 | inch | 4.8 / 1 | mm | 123 / 24 |
| D Height Stowed | ft | 8' 2" | mm | 2492 | ft | 8' 7" | mm | 2619 |
| E Height (ground to platform bottom) | ft | 4' 5 1/2" | mm | 1362 | ft | 4' 10 1/2" | mm | 1489 |
| F Height Storage (with guardrails) | ft | 6' 6" | mm | 1985 | ft | 6' 11" | mm | 2112 |
| G Platform length - extended | ft | 11' 8" | mm | 3570 | ft | 11' 8" | mm | 3570 |
| H Platform length | ft | 7' 5" | mm | 2270 | ft | 7' 5" | mm | 2270 |
| Extension platform length | ft | 4' 3" | mm | 1295 | ft | 4' 3" | mm | 1295 |
| Capacity / number of people | lb / # | 660 / 3 | kg / # | 300 / 3 | lb / # | 510 / 2 | kg / # | 230 / 2 |
| Electric drive motors | V / HP | 24 / 4.0 | V / kW | 24 / 3.0 | V / HP | 24 / 4.0 | V / kW | 24 / 3.0 |
| Lifting power pack - hydraulic type | V / HP | 24 / 4.0 | V / kW | 24 / 3.0 | V / HP | 24 / 5.3 | V / kW | 24 / 4.0 |
| Lifting / Lowering time (loaded) | sec | 70 / 45 | sec | 70 / 45 | sec | 73 / 55 | sec | 73 / 55 |
| Battery (traction battery) C5 | V / Ah | 24 / 250 | V / Ah | 24 / 250 | V / Ah | 24 / 300 | V / Ah | 24 / 300 |
| Battery charger | V / A | 24 / 30A | V / A | 24 / 30A | V / A | 24 / 30A | V / A | 24 / 30A |
| Hydraulic tank capacity | gal | 4.9 | l | 17 | gal | 4.9 | l | 17 |
| Ground pressure - full load / per wheel | psi | 313/199 | psi | 313/199 | psi | 320/202 | psi | 320/202 |
| Drive speed | mph | 2.5 | km / h | 4 | mph | 2.5 | km / h | 4 |
| Safety traction | mph | 0.4 | km / h | 0.6 | mph | 0.4 | km / h | 0.6 |
| Gradeability | % | 25 | % | 25 | % | 25 | % | 25 |
| Internal steering radius | ft | 0 | m | 0 | ft | 0 | m | 0 |
| External steering radius | ft | 7' 2 1/2" | m | 2.22 | ft | 7' 2 1/2" | m | 2.22 |
| Tire size (wheel dimension) | inch | 16" x 5" | mm | 410 x 130 | inch | 16" x 5" | mm | 410 x 130 |
| Wheel type | cushion | | cushion | | cushion | | cushion | |
| Max side/longitudinal tilt angle | degrees | 1.5 / 2.5 | degrees | 1.5 / 2.5 | degrees | 1.2 / 2.5 | degrees | 1.2 / 2.5 |
| Total weight | lb | 6250 | kg | 2835 | lb | 7110 | kg | 3225 |

ELECTRIC SCISSOR LIFTS

Series IM 47



IM 4740



IM 4746



Standard AC power to the platform



Standard cushioned non-marking tires

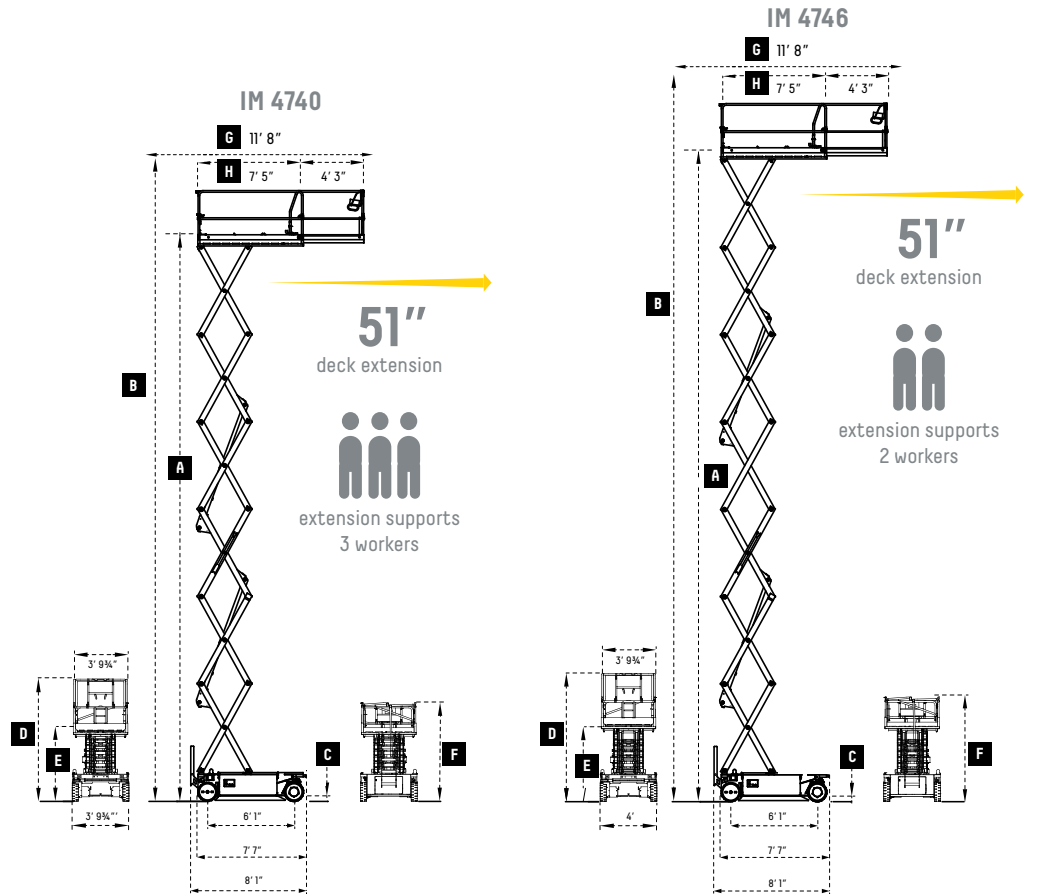
OPTIONAL EQUIPMENT

- 120 V cable with plug, socket and safety cut-out (standard for US Models)
- Gel battery IM 47
- 2° rotating beacon kit

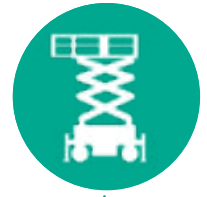
INDOOR USE



47"
total width



| IM 47 | IM 4740 E (12122) | | | | IM 4746 E (14122) | | | |
|---|-------------------|-----------|---------|-----------|-------------------|-----------|---------|-----------|
| A Platform Height | ft | 39' 4" | mm | 12000 | ft | 45' 7" | mm | 13900 |
| B Working Height | ft | 45' 11" | mm | 14000 | ft | 52' 2" | mm | 15900 |
| C (Pot-hole raised/lowered) | inch | 4.7 / 1 | mm | 120/22 | inch | 4.7 / 1 | mm | 120/22 |
| D Height Stowed | inch | 8' 7" | mm | 2619 | inch | 9 | mm | 2746 |
| E Height (ground to platform bottom) | ft | 4' 10½" | mm | 1489 | ft | 5' 3½" | mm | 1616 |
| F Height Storage (with guardrails) | ft | 6' 11" | mm | 2112 | ft | 7' 4" | mm | 2239 |
| G Platform length - extended | ft | 11' 8" | mm | 3570 | ft | 11' 8" | mm | 3570 |
| H Platform length | ft | 7' 5" | mm | 2270 | ft | 7' 5" | mm | 2270 |
| Extension platform length | ft | 4' 3" | mm | 1295 | ft | 4' 3" | mm | 1295 |
| Capacity / number of people | lb | 770 / 3 | kg / # | 350 / 3 | lb | 550 / 2 | kg / # | 250 / 2 |
| Electric drive motors | V / HP | 24 / 4.0 | V / kW | 24 / 3.0 | V / HP | 24 / 4.0 | V / kW | 24 / 3.0 |
| Lifting power pack - hydraulic type | V / HP | 24 / 4.0 | V / kW | 24 / 3.0 | V / HP | 24 / 5.3 | V / kW | 24 / 4.0 |
| Lifting / Lowering time (loaded) | sec | 68 / 55 | sec | 68 / 55 | sec | 68 / 67 | sec | 68 / 67 |
| Battery (traction battery) C5 | V / Ah | 24/300 | V / Ah | 24/300 | V / Ah | 24/300 | V / Ah | 24/300 |
| Battery charger | V / A | 24 / 30A | V / A | 24 / 30A | V / A | 24 / 30A | V / A | 24 / 30A |
| Hydraulic tank capacity | gal | 4.9 | l | 17 | gal | 4.9 | l | 17 |
| Ground pressure - full load / per wheel | psi | 238/206 | psi | 238/206 | psi | 236/206 | psi | 236/206 |
| Drive speed | mph | 2.5 | km / h | 4 | mph | 2.5 | km / h | 4 |
| Safety traction | mph | 0.4 | km / h | 0.6 | mph | 0.4 | km / h | 0.6 |
| Gradeability | % | 25 | % | 25 | % | 25 | % | 25 |
| Internal steering radius | ft | 0 | m | 0 | ft | 0 | m | 0 |
| External steering radius | ft | 92½" | m | 2.35 | ft | 92½" | m | 2.35 |
| Tire size (wheel dimension) | inch | 16" x 5" | mm | 410 x 130 | inch | 16" x 5" | mm | 410 x 130 |
| Wheel type | cushion | | cushion | | cushion | | cushion | |
| Max side/longitudinal tilt angle | degrees | 1.8 / 3.0 | degrees | 1.8 / 3.0 | degrees | 1.2 / 2.0 | degrees | 1.2 / 2.0 |
| Total weight | lb | 6430 | kg | 2915 | lb | 6610 | kg | 3000 |



ROUGH TERRAIN

SERIES IM RT SCISSOR LIFTS

IMER's Rough Terrain Scissor Lifts lead the industry with innovative technologies as a direct result of years of experience, concentrated research, and a goal to provide superior products that deliver unparalleled productivity and safety.

The IMER IM RT Series are customizable with AC electric or diesel / electric engines. Ideal for any terrain and the perfect solution for outdoor and indoor use.

Engineered to allow operators to drive in any position, including at full height, providing superior productivity.

The IM RT Series scissors ensure the maximum capacity in both the platform and on the manual deck extension. They offer traction and stability at maximum height, even with multiple workers safely working on the fully extended platform.

In addition to the standard features and accessories, IMER Group has developed **IMERVIEW**, a GPS system which makes it possible to monitor and/or control aerial machines remotely in real time.

This invaluable tool will allow rental companies or dealers to manage every machine in their fleet through a dashboard, while gathering reports for machine performance and maintenance, accounting, billing, and more.



PRODUCT RANGE

SERIES IM 7043 RT E

SERIES IM 7043 RT DE

STANDARD EQUIPMENT

- Manual deck extension (full capacity on extension deck)
- Auto-leveling jacks
- Front driving and steering wheels
- Hydraulic transmission 4WD
- Oscillating front axle
- Negative parking brakes
- Free wheel device
- Manual emergency lowering device
- Proportional controls
- Multi-function indicator on upper control box includes hour meter / battery charge indicator and fault code indicator
- Cylinder holding valves
- Manual deck extension 59 in (1.5 m)
- Tilt sensor with motion cut out and alarms
- Load sensor
- Motion alarm (travel and elevated)
- Rough terrain tires extra grip non-marking
- Removable control box
- Inward fold down railings
- Flashing beacon
- 120 V cable with plug socket and safety cut-out

BI-ENERGY DIESEL / ELECTRIC POWER

The IMER IM RT diesel / electric engine model can operate on Electric only, or Diesel only, making it two lifts in one.



The **SERIES IM RT** scissor lifts are the ideal solution in the cases requiring:

- **Rough terrain**
- **High productivity - multiple workers**
- **Hard-to-reach spaces**
- **Indoor / outdoor use** - construction: plumbing, electrical, and HVAC installation, industrial logistics, maintenance



PERFORMANCE VERSATILITY

The remarkable size and length of the platform and the extension provides increased performance. Support multiple workers and tools on the extended platform - extending further than competitive lifts. Work and drive safely at maximum height and at full load with no capacity restrictions.



4WD / ROUGH TERRAIN CAPABILITY

Massive 28" extra grip rough terrain tires, oscillation front axle and an impressive 35% gradeability.



AUTOMATED TECHNOLOGY

Automatic hydraulic stabilization system levels the machine on gravel and steep slopes.

ELECTRIC & DIESEL-ELECTRIC SCISSOR LIFTS

Series IM 7043 RT

ELECTRIC EQUIPMENT

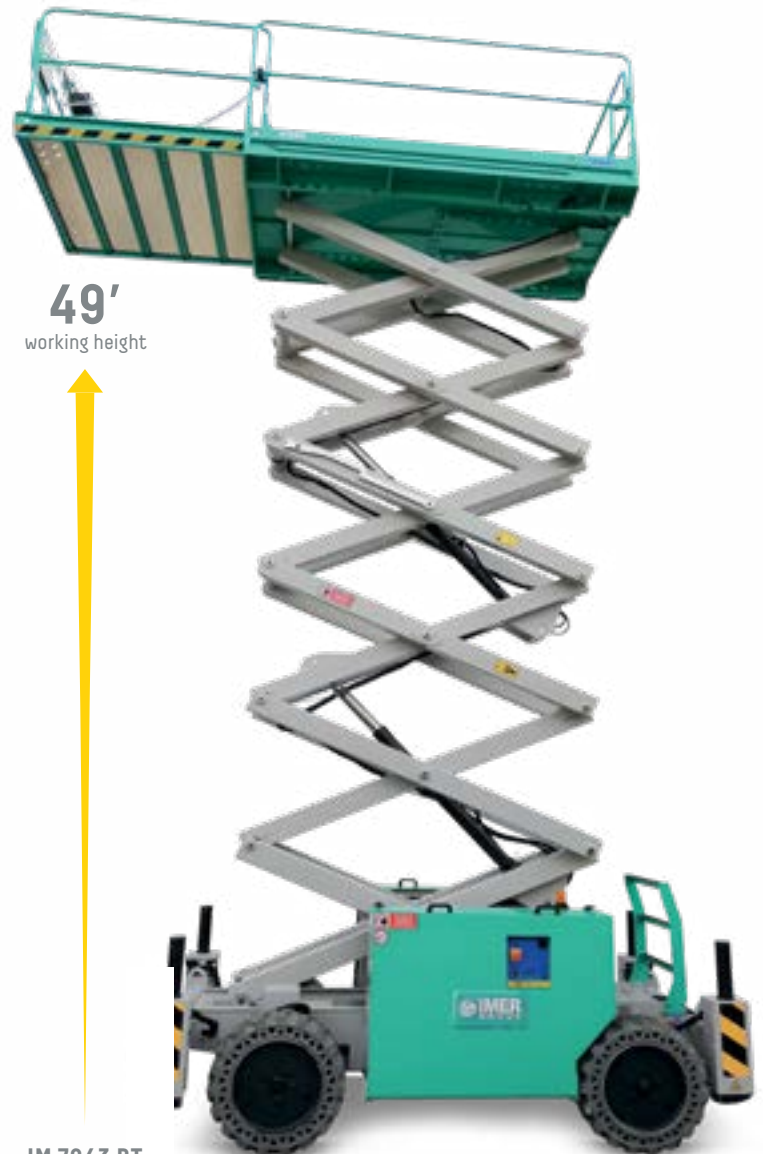
- AC Motor 48V-7.2kW
- Traction Battery 48V 300Ah (C5)
- Battery charger with automatic switch off
- Battery control system with low voltage cut-out protection
- Battery cut-out handle
- Rough terrain tires extra grip non-marking 28" X 9 1/2" (720x245 mm)

DIESEL-ELECTRIC EQUIPMENT

- Yanmar water cooled diesel engine
- Start-up battery 12V 66Ah
- Start-up battery alternator
- AC Motor 48V-7.2kW
- Traction Battery 48V 300Ah (C5)
- Battery charger with automatic switch off
- Battery control system with low voltage cut-out protection
- Battery cut-out handle
- Rough terrain tires extra grip non-marking 28" X 9 1/2" (720x245 mm)

OPTIONAL EQUIPMENT

- Rough terrain black tires



IM 7043 RT



Plug unit for battery charger and power supply on basket with battery level indicator (E and DE versions)



Simple and intuitive control box that can be removed from the basket for loading / unloading the machine



Best in class 40° steering

OUTDOOR AND INDOOR USE



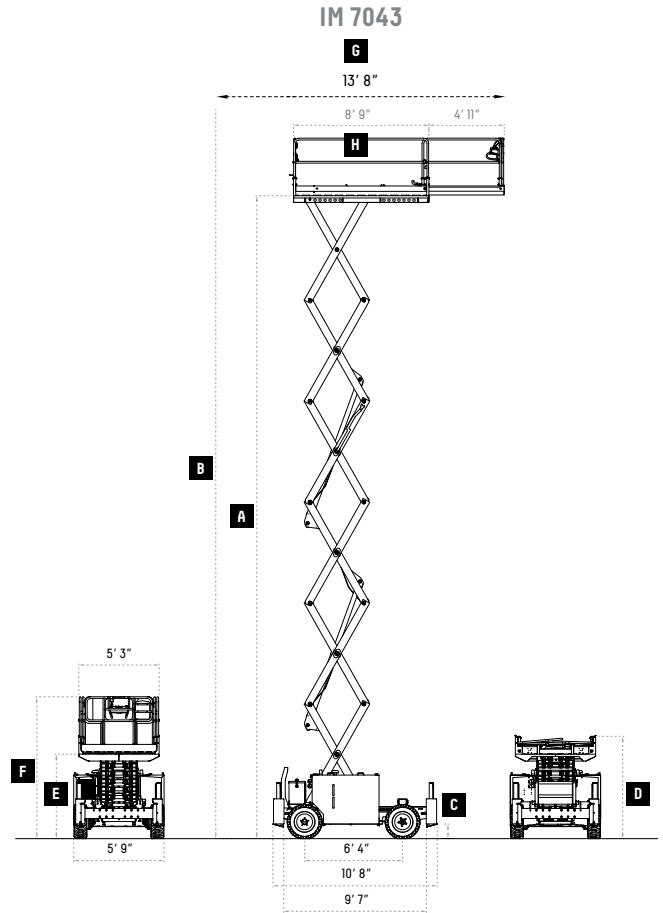
59"

deck extension



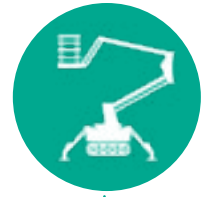
extension supports
4 workers

Manual deck extension of 59" (1.5 m)
for a total length of 13' 8" (4.2 m).
4 person unit authorized
for indoor and outdoor use.



| IM 7043 | IM 7043 RT E (13180 E) | | | | IM 7043 RT DE (13180 DE) | | | |
|--|------------------------|-------------------|--------|----------------|--------------------------|-------------------|--------|----------------|
| A Platform Height | ft | 43' | mm | 12800 | ft | 43' | mm | 12800 |
| B Working Height | ft | 48' | mm | 14800 | ft | 48' | mm | 14800 |
| C (Pot-hole raised/lowered) | inch | 12 | mm | 300 | inch | 12 | mm | 300 |
| D Height Stowed | ft | 6' 9" | mm | 2056 | ft | 6' 9" | mm | 2056 |
| E Height (ground to platform bottom) | ft | 5' 6" | mm | 1698 | ft | 5' 6" | mm | 1698 |
| F Height Storage (with guardrails) | ft | 9' 8" | mm | 2944 | ft | 9' 8" | mm | 2944 |
| G Platform length - extended | ft | 13' 8" | mm | 4200 | ft | 13' 8" | mm | 4200 |
| H Platform length | ft | 8' 9" | mm | 2700 | ft | 8' 9" | mm | 2700 |
| Extension platform length | ft | 4' 11" | mm | 1500 | ft | 4' 11" | mm | 1500 |
| Capacity (stabilized)* | lb / # | 882 (100) / 4* | kg / # | 400 (500) / 4* | lb / # | 882 (100) / 4* | kg / # | 400 (500) / 4* |
| Min. height from chassis to ground | inch | 12 | mm | 300 | inch | 12 | mm | 300 |
| Electric drive motors | V / HP | 48 / 10 | kW | 48 / 7.2 | V / HP | -- | kW | -- |
| Diesel engine - Yanmar | HP | -- | kW | -- | HP | 25 | kW | 18.8 |
| Lifting power pack - hydraulic type | V / HP | 48 / 3 | V / kW | 48 / 2.1 | V / HP | 48 / 3 | V / kW | 48 / 2.1 |
| Lifting / Lowering time (loaded) | sec | 36/35 | sec | 36/35 | sec | 36/35 | sec | 36/35 |
| Battery charger | V / A | 48/30A | V / A | 48/30A | V / A | 48/30A | V / A | 48/30A |
| Hydraulic tank capacity | gal | 14.8 | l | 56 | gal | 14.8 | l | 56 |
| Ground pressure - full load / per wheel | psi | 200/192 | psi | 200/192 | psi | 200/192 | psi | 200/192 |
| Drive speed | mp / h | 2.5 | km / h | 4 | mp / h | D: 3.4 / E: 2.5 | km / h | D: 5.5 / E: 4 |
| Safety traction | mp / h | 0.4 | km / h | 0.6 | mp / h | 0.4 | km / h | 0.6 |
| Internal steering radius | ft | 5' 7" | m | 1.94 | ft | 5' 7" | m | 1.94 |
| Gradeability | 2WD: 25% / 4WD: 35% | | | | 2WD: 25% / 4WD: 35% | | | |
| External steering radius (without stabilizers) | ft-In | 15'-10" (14'-10") | m | 4.83 (4.52) | ft-In | 15'-10" (14'-10") | m | 4.83 (4.52) |
| Tire size (wheel dimension) | inch | 28" x 9 1/4" | m | 720 x 245 | inch | 28" x 9 1/4" | m | 720 x 245 |
| Max side/longitudinal tilt angle | degrees 2.0 / 2.5 | | | | degrees 2.0 / 2.5 | | | |
| Total weight (without stabilizers) | lb | 10360 (10470) | kg | 4700 (4750) | lb | 10800 (10580) | kg | 4900 (4800) |

* 2 people for outdoor use with non-stabilized platform



TRACK DRIVEN

SERIES IM R ARTICULATED & TELESCOPIC LIFTS

IMER was one of the first companies to introduce tracked aerial units to the international market years ago.

In compliance with strict European safety standards, the IM R Series was engineered with safety features that far exceeded Western regulations of that time.

Today, with an increased focus on US safety codes, IMER is introducing two models to the North American marketplace that were engineered and built in compliance with European and US safety standards.

While the IM R Series was first engineered with safety in mind, user experience, maneuverability, and versatility were also a priority.

The IM R Series is an easy to operate, compact and lightweight solution for maximum clearance and versatility. The reduced size of the units and portable remote controls ensure maneuverability in tight spaces while providing added operator safety. In addition, track-driven capabilities offer maximum versatility for both outdoor and indoor applications.

Like IMER's scissor lift series, the IM R 19 and IM R 13 T share innovative technologies and a commonality of parts, which simplifies maintenance and improves parts costs and accessibility.

In addition to the standard features and accessories, IMER Group has developed **IMERVIEW**, a GPS system which makes it possible to monitor and/or control aerial machines remotely in real time.

PRODUCT RANGE

SERIES IM R 19

SERIES IM R 15 DA

SERIES IM R 13 T

STANDARD EQUIPMENT

- Automatic outrigger leveling system
- 355° rotation (non-continuous)
- Electric motor for indoor use
- Air and Water connections to the platform
- 120V AC power to platform
- Removable wireless control box
- Tether for wired connectivity
- Emergency hand pump
- Cylinder holding valve
- Hour meter
- Load and tip detection sensor
- Load cell
- Hydraulic jib
- Rubber tracks
- Three travel speeds
- Remote battery charger
- Removable basket with 1 pin detach
- Overload sensor
- 120V battery charger
- Proportional controls with diagnostics
- Honda GX390 Engine
- Hydraulically adjustable track width
- Hydraulic basket rotation - 124°



UNMATCHED ACCESSIBILITY

The IM R Tracked Series allows you to go where no towable or self-driven lifts can go and easily access those hard-to-reach areas. With a remarkable extension height, side outreach and 355° rotation, the IM R Series offers unmatched accessibility as well.



The **IM R SERIES** bi-energy articulated & telescopic tracked platforms are the ideal solution in the cases requiring:

- **Hard-to-reach outdoor spaces**
(where no towable or self-driven units can access)
- **Indoor spaces with limited access**
(doorways, isles and staircases)
- **Outdoor use** - arborists, building maintenance, construction - signage, electrical, painting
- **Indoor use** - building maintenance, construction (plumbing, electrical, and HVAC)



FAST & SECURE LEVELING

Automatic outrigger leveling system for quick set up and peace of mind.



EASY USER EXPERIENCE

A user-friendly control panel. The easily removable remote controlled unit allows for more space available in the basket and navigating from the ground.



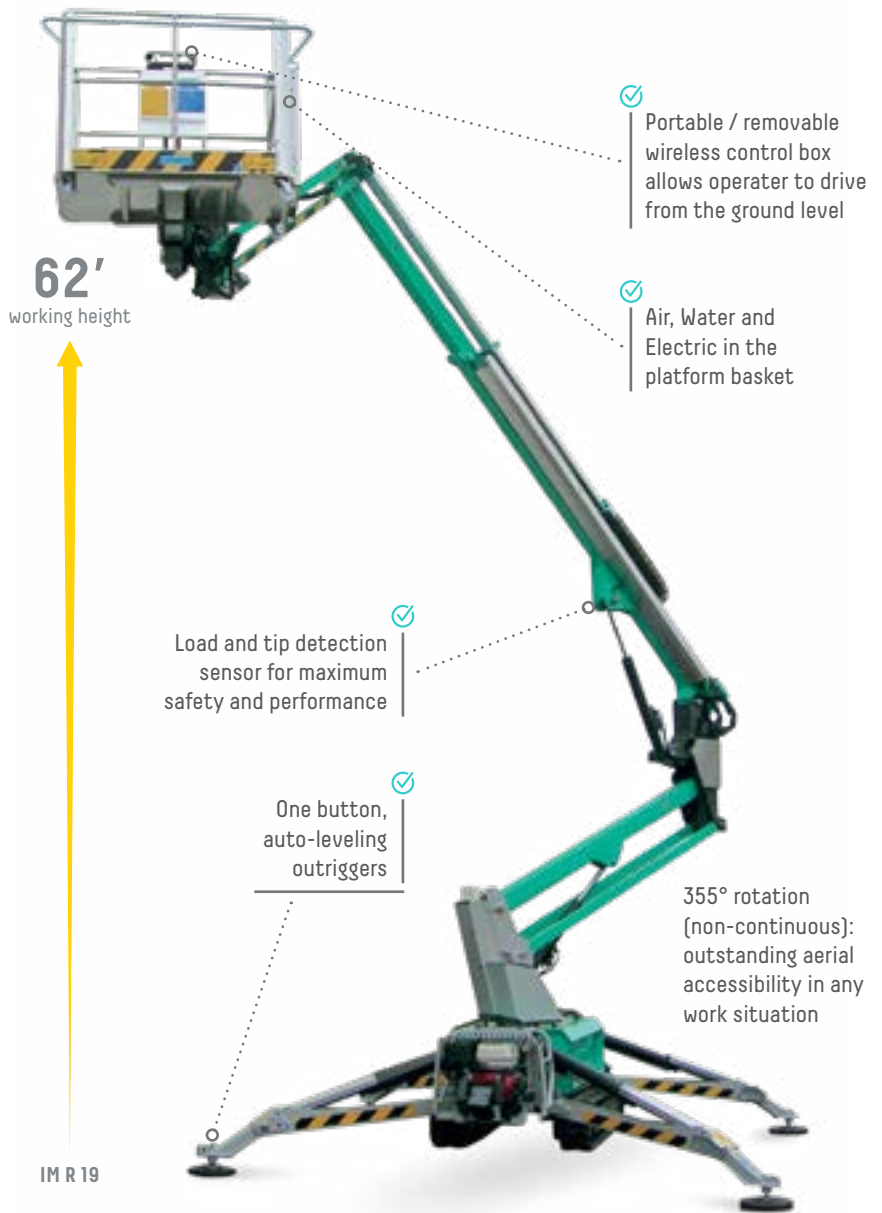
EASY ACCESS

In addition to the removeable control box in the basket, the IM R Series includes an easy to access ground control panel.

ATRIUM LIFT ARTICULATED Series IM R 19

STANDARD EQUIPMENT

- Automatic outrigger leveling system
- 355° rotation (non-continuous)
- 120V, 15 amp electric motor for indoor use
- Air / Water outlet in the platform basket
- 120V AC power to platform
- Removable wireless control box
- Tether for wired connectivity
- Max 510 lbs in basket (two person capacity)
- Three travel speeds
- Emergency hand pump
- Cylinder holding valve
- Hour meter
- Load and tip detection sensor
- Load cell
- Hydraulic jib
- Rubber tracks
- Remote battery charger
- Removable basket with 1 pin detach
- Overload sensor
- 120V battery charger
- Proportional controls with diagnostics
- Honda GX390 Engine
- Hydraulically adjustable track width
- Oversized 14" outrigger pads
- Hydraulic basket rotation - 124°



OUTDOOR AND INDOOR USE

OPTIONAL EQUIPMENT

- Non-marking rubber tracks
- Working light in the platform basket
- 12 V emergency pump
- 120 V desktop remote charge
- Sliding & oversized outrigger pads

| | IM R 19 | | | |
|--|---------|-----------------------------------|--------|---------------------------------|
| Working height | ft | 62' | m | 19 |
| Platform height | ft | 56' | m | 17 |
| Side outreach (weight in basket) | ft / lb | 32' / 176 - 28' / 310 - 23' / 510 | m / kg | 9.75 / 80 - 8.5 / 120 - 7 / 227 |
| Rotation (non-continuous) | deg | 355° | deg | 355° |
| Basket dimensions | in | 57" x 28" x 43" | mm | 1448 x 711 x 1092 |
| Basket rotation | deg | 124° | deg | 124° |
| Transport length (without basket) | ft | 17' 5" / 15' 2" | mm | 5308 / 4622 |
| Transport width (without basket) | ft | Max 3' 6" / Min 2' 7" | mm | Max 1066 / Min 787 |
| Height in stowed position (w/ stabilizers in position) | ft | Min 6' 6" / Max 6' 11" | mm | Min 1981 / Max 2108 |
| Overall outrigger footprint | ft | 10' 10" x 10' 11" | mm | 3302 x 3327 |
| Stabilizer load | psf | 3930 | daN | 1750 |
| Driving speed | mph | 0 - 1.25 | km / h | 0 - 2 |
| Gradeability | % | 32% | % | 32% |
| Electric pump | V / HP | 120 / 1.5 | V / kW | 120 / 1.125 |
| Max. hydraulic pressure | psi | 3190 | bar | 220 |
| Battery | V | 12 | V | 12 |
| Battery charger | V/A | 12 / 12 | V/A | 12 / 12 |
| Gas motor | | Honda GX390 | | Honda GX390 |
| Machine weight | lb | 5370 | kg | 2435 |



Standard emergency hand pump with ease of access and operation.



Compact jib assembly hosting both the load sensor and basket rotation system.



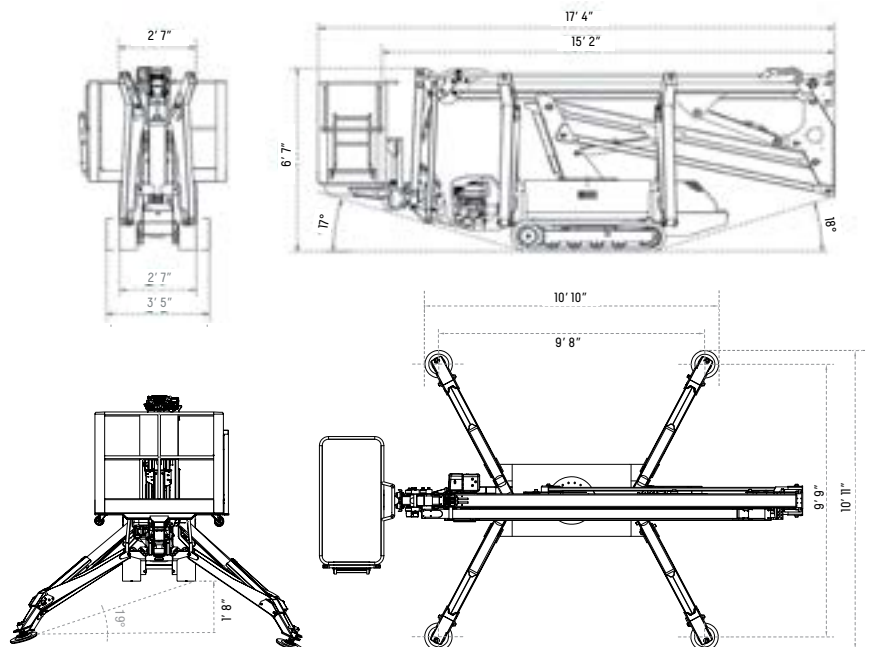
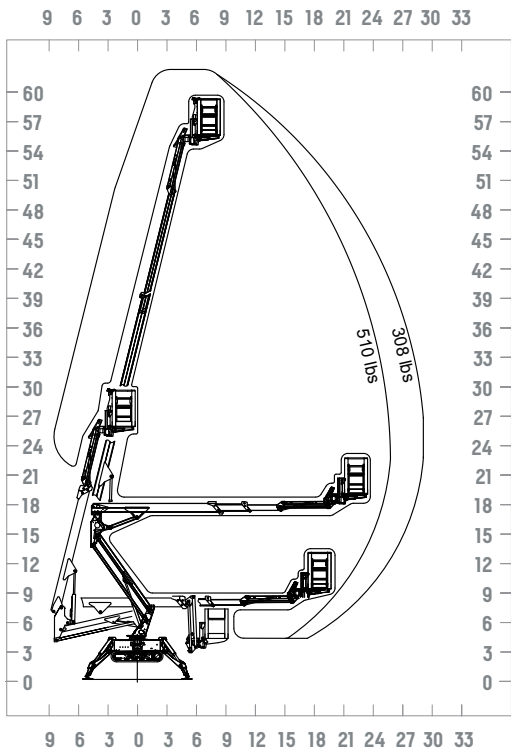
Hydraulically adjust the track width for added stability and traction.



Compact width allows access in narrow, hard to reach places



Easy access both outdoor and indoor.
Non-marking tracks for indoor use

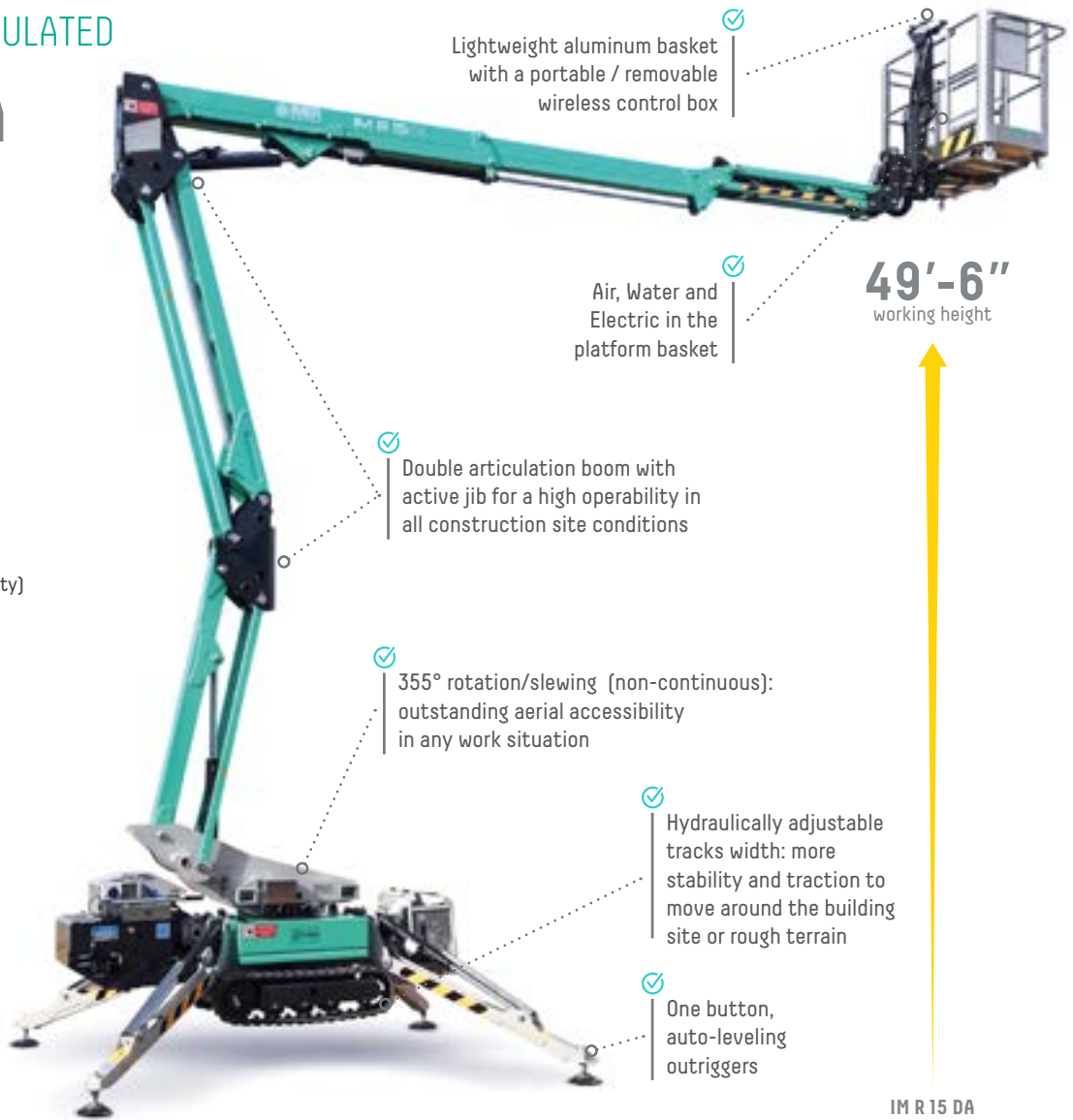


ATRIUM LIFT ARTICULATED

IM R 15 DA

STANDARD EQUIPMENT

- Automatic outrigger leveling system
- 355° rotation (non-continuous)
- Hydraulic basket rotation - 124°
- 120V, 15 amp electric motor for indoor use
- Air / Water outlet in the platform basket
- 120V AC power to platform
- Removable wireless control box
- Tether for wired connectivity
- Max 507 lbs in basket (two person capacity)
- Three travel speeds
- Emergency hand pump
- Cylinder holding valve
- Hour meter
- Load and tip detection sensor
- Load cell
- Hydraulic jib
- Rubber tracks
- Remote battery charger
- Removable basket with 1 pin detach
- Overload sensor
- 120V battery charger
- Honda GX390 engine
- Yanmar L100N diesel engine
- Hydraulically adjustable track width
- Proportional controls with diagnostics



Lightweight aluminum basket with a portable / removable wireless control box

Air, Water and Electric in the platform basket

49'-6"
working height

Double articulation boom with active jib for a high operability in all construction site conditions

355° rotation/slewing (non-continuous): outstanding aerial accessibility in any work situation

Hydraulically adjustable tracks width: more stability and traction to move around the building site or rough terrain

One button, auto-leveling outriggers

IM R 15 DA

OUTDOOR AND INDOOR USE

OPTIONAL EQUIPMENT

- Non-marking rubber tracks
- Working light in the platform basket
- 12 V emergency pump
- 120 V desktop remote charge
- Sliding, oversized outrigger shoes
- Oversized outrigger pads
- Double speed traction
- Aluminium basket (2' 11-1/2" x 2' 5")
- Aluminium basket (4' 7" x 2' 3-1/2")
- IMERVIEW GPS Remote Monitor System

| | IM R 15 DA | | | |
|-----------------------------------|------------|------------------------|--------|---------------------|
| Working height | ft | 49' 6" | m | 15.10 |
| Platform height | ft | 43' | m | 13.10 |
| Side outreach (weight in basket) | ft / lb | 23' / 506 | m / kg | 7.00 / 230 |
| Rotation (non-continuous) | deg | 355° | deg | 355° |
| Basket dimensions | in | 57" x 27 1/2" x 43" | mm | 1.40 x 0.70 x 1.10 |
| Basket rotation | deg | 124° | deg | 124° |
| Transport length (without basket) | ft | 14' 5" / 12' | m | 4.40 (3.65) |
| Transport width (without basket) | ft | Min 2' 7" / Max 3' 5" | m | Min 0.79 / Max 1.06 |
| Height in stowed position | ft | Min 6' 6" / Max 6' 11" | m | Min 1.99 (Max 2.05) |
| Overall outrigger footprint | ft | 9' 6" x 10' | mm | 2.92 x 3.08 |
| Stabilizer load | ft-lb | 3930 | daN | 1750 |
| Driving speed | mph | 0 - 1.12 | km / h | 1.8 |
| Gradeability | % | 17.5° / 32% | % | 17.5° |
| Platform capacity | lb | 507 | kg | 120 / 1.125 |
| Gas engine Honda GX390 | | 11 HP / 3600 rpm | | 11 HP / 3600 rpm |
| Diesel engine Tanmar L100N | | 9.9 HP / 3600 rpm | | 9.9 HP / 3600 rpm |
| Machine weight | lb | 4475 | kg | 2030 |

*w/ stabilizers in position



Outstanding accessibility with a 355° rotation (non-continuous) and 124° jib rotation



A Honda Engine and Electric Motor provide a bi-energy solution, allowing both indoor and outdoor use



Lightweight aluminum basket options available for one or two operators

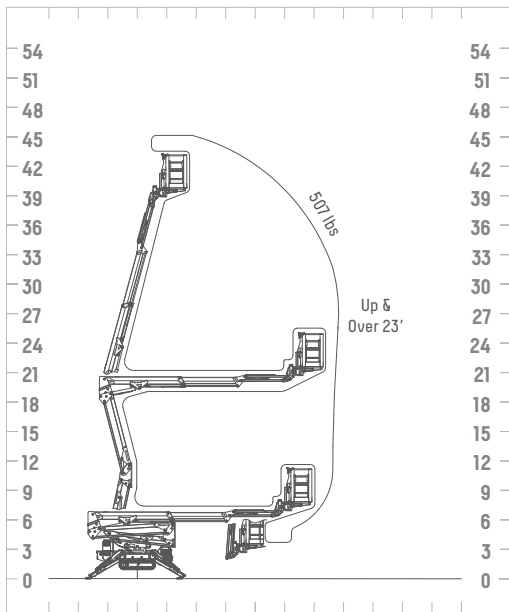


Compact 31" width allows access in narrow, hard to reach places

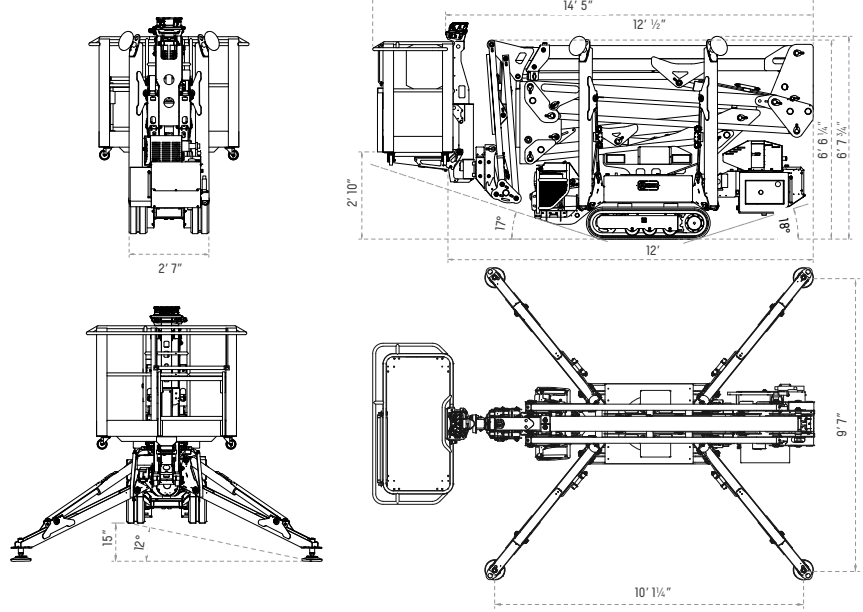


Easy access both outdoor and indoor. Non-marking tracks for indoor use - transport width is merely 3' 5"

9 6 3 0 3 6 9 12 15 18 21 24 27 30 33



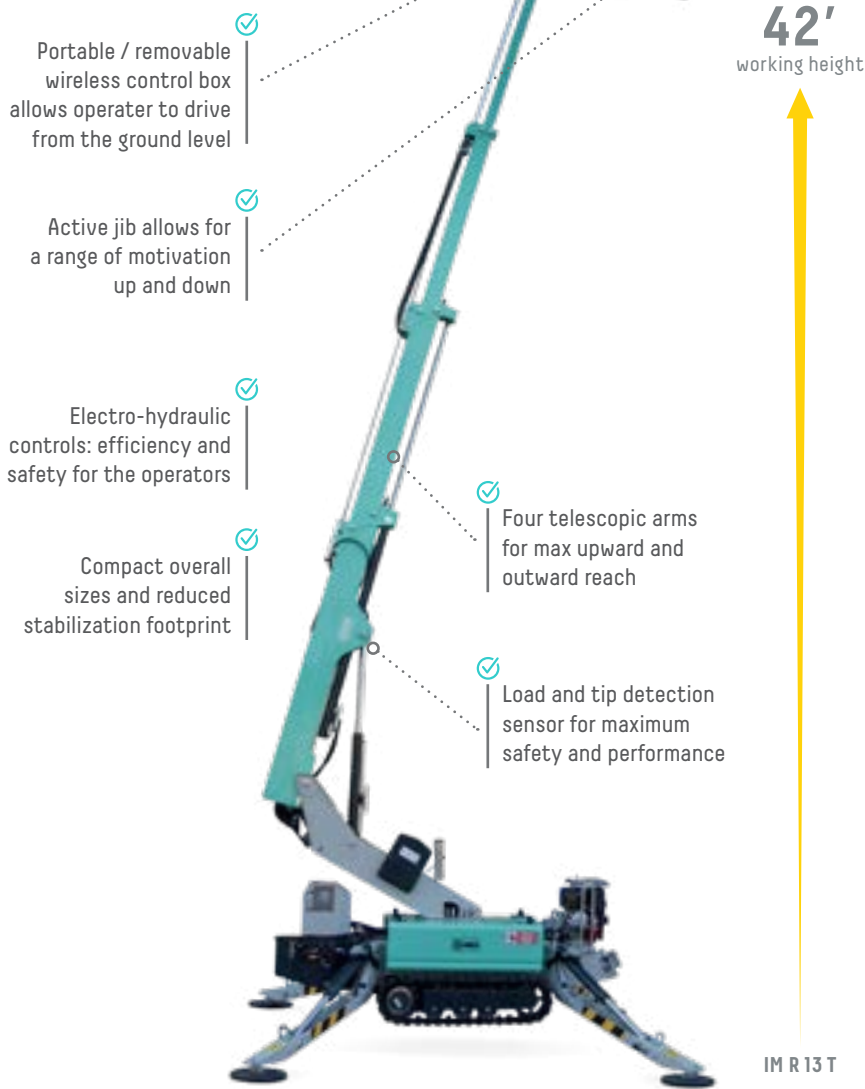
9 6 3 0 3 6 9 12 15 18 21 24 27 30 33



ATRIUM LIFT TELESCOPIC Series IM R 13 T

STANDARD EQUIPMENT

- Automatic outrigger leveling system
- 120V, 15 amp electric motor for indoor use
- Air / Water outlet in the platform basket
- 120V AC power to platform
- Removable wireless control box
- Tether for wired connectivity
- Emergency hand pump
- Cylinder holding valve
- Hour meter
- Load and tip detection sensor
- Load cell
- Hydraulic jib
- Rubber tracks
- Three travel speeds
- Remote battery charger
- Removable basket with 1 pin detach
- Overload sensor
- 120V battery charger
- Proportional controls with diagnostics
- Honda GX390 Engine
- Hydraulic basket rotation - 124°



OUTDOOR AND INDOOR USE

OPTIONAL EQUIPMENT

- Non-marking rubber tracks
- Working light in the platform basket
- 12 V emergency pump
- 120 V desktop remote charge
- Sliding, oversized outrigger shoes
- Oversized outrigger pads
- Double speed traction
- Aluminium basket (2' 11-1/2" x 2' 5")
- Aluminium basket (4' 7" x 2' 3-1/2")
- IMERVIEW GPS Remote Monitor System

| | IM R 13 T | | | |
|--|-----------|--------------------------|---------|------------------------|
| Working height | ft | 42' | m | 13 |
| Platform height | ft | 36' | m | 11 |
| Side outreach (weight in basket) | ft / lb | 17' / 510 - 20' 6" / 308 | m / kg | 5.25 / 230 - 6.3 / 140 |
| Rotation (non-continuous) | deg | 355° | deg | 355° |
| Basket dimensions | in | 51" x 28" x 43" | mm | 1300 x 750 x 1100 |
| Transport length (without basket) | ft | 12' 4" / 9' 8" | mm | 3780 / 3000 |
| Transport width (without basket) | ft | 4' 3" / 2' 6" | mm | 1300 / 790 |
| Height in stowed position (w/ stabilizers in position) | ft | 6' 6 3/4" | mm | 2000 |
| Overall outrigger footprint | ft | 8' 8" / 9' 2" | mm | 2700 x 2800 |
| Driving speed | mph | .93 | km/h | 1.5 |
| Gradeability | % | 30% | deg / % | 30% |
| Platform capacity | lb | 510 | kg | 230 |
| Electric motor | V / HP | 120 / 1.5 | V / kW | 120 / 1.125 |
| Gas motor | | Honda GX390 | | Honda GX390 |
| Machine weight | lb | 3410 | kg | 1550 |



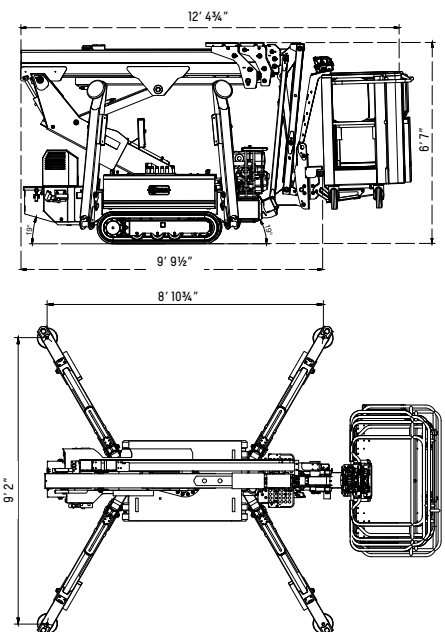
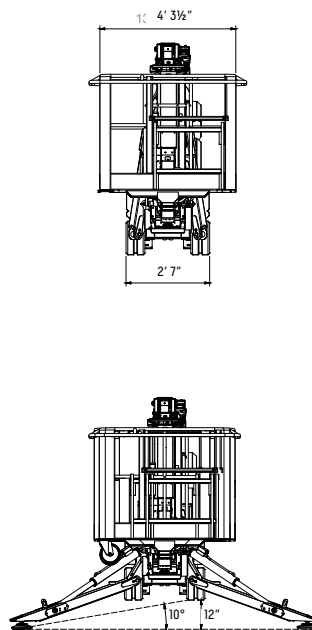
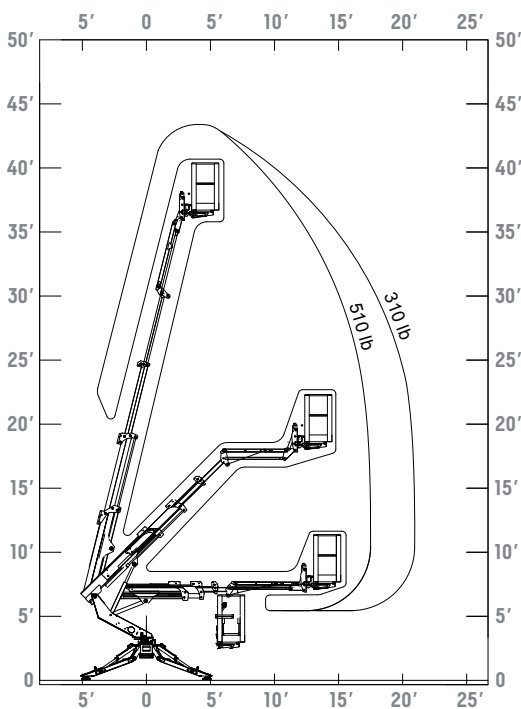
Thermal-magnetic switch panel and power line inlet.



Easily attach or remove the basket with the one-pin mounting system.



Rugged engine guard for improved protection.



IMER ACCESS WARRANTY INFO

WARRANTY & LIABILITY POLICY

LIMITED WARRANTY & LIMITATION OF LIABILITY

IMER Group | USA warrants its products to be free of defects in material or workmanship for:

ONE YEAR FROM END USER'S DATE OF PURCHASE

The warranty period begins on the date of purchase by the End User of the product. All warranty is based on the following limited warranty terms and conditions, including the disclaimer of implied warranties and consequential damages.

IMER Group | USA's obligation and liability under this warranty is limited to repairing or replacing parts if, after IMER Group | USA's inspection, there is determined to be a defect in material or workmanship. IMER Group | USA reserves the right to repair or replace.

If IMER Group | USA chooses to replace the part, it will be at no cost to the customer and will be made available to the IMER Group | USA Dealer from whom the End User purchased the product or an Authorized Service Provider.

Replacement or repair parts, installed in the product, are warranted only for the remainder of the warranty period of the product as though they were the original parts.

IMER Group | USA does not warranty engines or batteries. Engine warranty claims should be made directly to an authorized factory service center for the particular engine manufacturer. Batteries are not warranted due to unknown treatment during transport, etc, and any battery claims should be directed to the battery manufacturer.

IMER Group | USA's warranty does not cover the normal maintenance of products or its components (such as engine tune-ups and oil & filter changes). The warranty also does not cover normal wear and tear items (such as belts and consumables).

IMER Group | USA's warranty will be void if it is determined that the defect resulted from operator abuse, failure to perform normal maintenance on the product, modification to product, alterations or repairs made to the product without the written approval of IMER Group | USA.

IMER Group | USA will pay shop labor on warranty items at the IMER Shop Labor Rate in existence on the date of the warranty claim. An IMER Group | USA labor chart will determine the time allowed to complete a repair and will govern the shop labor hours that will be allowed. IMER will not reimburse for transportation or travel expenses.

LIMITED WARRANTY & LIMITATION OF LIABILITY

IMER Group | USA will pay freight on warranty replacement parts at standard ground rates. No warranty replacement parts will be shipped air freight at the expense of IMER Group | USA. IMER Group | USA only pays outbound freight charges when sending warranty replacement parts to the customer via ground service. IMER Group | USA does not pay any inbound freight. However, if IMER Group | USA determines this to be a warranted item, only then will IMER Group | USA reimburse the customer for inbound freight at standard ground rates.

IMER Group | USA Warranty Policy will not cover the following: taxes; shop supplies; environmental surcharges; air freight; travel time; loss of time; inconvenience; loss of rental revenue; rental costs of equipment used to replace the product being repaired; loss of use of the product; commercial loss; or any other charges whatsoever or any liabilities for direct, incidental, or consequential damage or delay.

IMER Group | USA makes no other warranty, expressed or implied. This limited warranty is in lieu of the warranty of merchantability and fitness.

No IMER Group | USA employee or representative is authorized to change this warranty in any way or grant any other warranty unless such change is made in writing and signed by an officer of IMER Group | USA.

This warranty shall be void, if, upon the occurrence of any incident involving any product made by IMER Group | USA and resulting in any personal injury or property damage, customer shall fail to notify IMER Group | USA within 48 hours of such occurrence or permit IMER Group | USA and its representatives to have immediate access to such product and all records of or within the control of the customer relating to the product and occurrence.

WARRANTY CLAIM POLICY

Before contacting Customer Service regarding a possible warranty claim, you must have the following:

1. The end user's date and proof of purchase, or a copy of the completed warranty card or online warranty registration.
2. Your original invoice copy from IMER Group | USA
3. The machine's model number and serial number,
4. A complete description of the problem or failure.

IMER Group | USA WARRANTY PROCESS

The customer gathers the information listed above and then completes a **Return Goods Authorization form (RGA)**.

The customer then returns the goods to IMER Group | USA freight prepaid with the RGA number included inside the package and RGA number displayed on the outside of the package. All collect shipments to IMER Group | USA will be refused and returned at the customer's expense.

IMER Group | USA then determines if the claim is warranty or non-warranty.
a. If a warranty, IMER Group | USA will issue a credit to customer's account.
b. If non-warranty, IMER Group | USA will notify the customer.

NOTE: IMER Group | USA will only issue a credit to customer's account; no cash refunds will be made. If a customer needs an IMER Group | USA part to repair the end user's machine while waiting for warranty consideration, the customer will be required to order and purchase the replacement part.

EXTENDED WARRANTY

IMER Group | USA offers extended warranties on all Access products. Please speak to your sales representative to learn more about the warranty options and pricing.

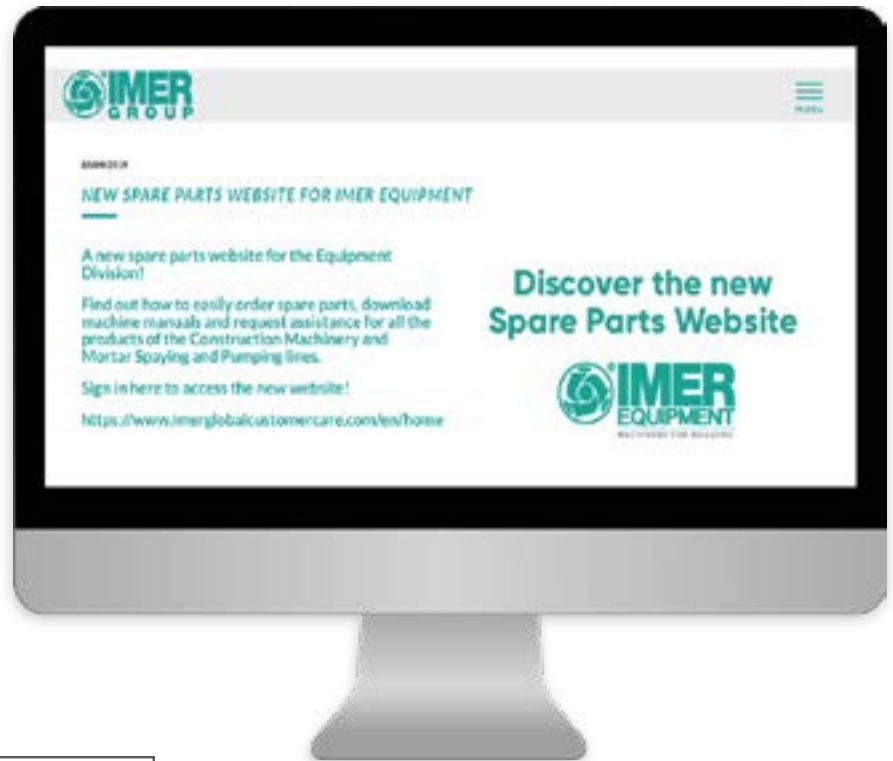
IMER PARTS - ONLINE SUPPORT

ONE WEBSITE, ALL PARTS.

The new **IMER Parts** website has been launched offering customers the ability to search for parts by the part number or serial number, then easily locate the parts you need using the 3-D exploded view of the equipment diagrams. This website also includes a section for equipment user guides and manuals, and a Help Desk.

Get started today.

Log in, create your account, and enjoy **ordering parts, made easy.**



www.imerglobalcustomer care.com

IMER SUPPORT

GOT QUESTIONS?

Call Us Toll-Free (800) 275-5463

Call our toll-free phone number to speak to an IMER Representative regarding Sales, Customer Service, or Parts.

We can also help you locate a dealer, a service center, or a sales representative closest to you.



TOLL FREE: 800.275.5463
WWW.IMERUSA.COM



TOGETHER WE BUILD

IMER USA, Inc.
423 Bank Street, Suite 180
Southlake, TX 76092
Tel. (800) 275-5463 - Fax (301) 336-6687
www.imerusa.com



IMER Group | USA reserves the right to change the information contained herein without prior notice when they consider it justified. The data and dimensions are therefore not to be considered as binding. The illustrations may include accessories and therefore they could be slightly different from the standard versions of the equipment.

© Copyright by IMER Group | USA