



## WET PLANTS

ORUDNK 80/105 100/130

120/160 130/170 L-B

ORU DNK MD 3000/2000\_ 4500/3000\_5000/3350

ORU LOGIK L4-L5 \_ ORU LOGIK B4-B5





MOBILE WET

ORU DNK MD 3000/2000\_  
4500/3000\_5000/3350  
ORU LOGIK L4-L5 \_ ORU LOGIK B4-B5

ORU DNK

80/105

100/130

120/160

130/170



MAXIMUM TRANSPORTABILITY  
HIGH COMPACT  
MAXIMUM RELIABILITY

ORU DNK 80 + LOGIK L4

*High performance compact mobile batching plant.  
Easy to transport, quick to set up.*







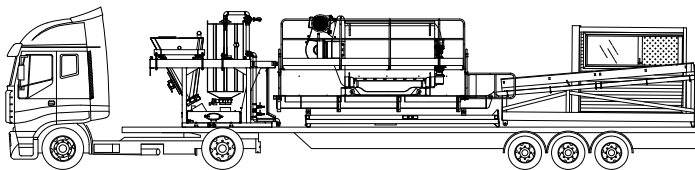
## DISTINCTIVE FEATURES

- MIXING UNIT WITH HORIZONTAL TWIN SHAFT MIXER: POWER AND EFFICIENCY
- PRE-ASSEMBLED AND PRE-WIRED MONOBLOCK THAT SIGNIFICANTLY REDUCES INSTALLATION AND START UP TIME
- MAXIMUM MOBILITY AND TRANSPORTABILITY
- EXTREMELY VERSATILE FOR MEDIUM AND HIGH PRODUCTION CAPACITY PLANTS
- SIMPLE TO USE



ORUDNK 80/105 / 100/130 / 120/160 / 130 / 170 mixing unit with chevron conveyor belt and built-in cabin (even during transport)

## ORU DNK MIXING GROUP TRANSPORT CONFIGURATION



Transport valid for the standard configuration

## EASY TO TRANSPORT AND ASSEMBLE

ORUDNK 80/105\_100/130\_120/160\_130/170 - LOGIK L4-L5-B4



### BY ROAD

4 STANDARD TRUCKS  
(13.60 M / 44 FT - 6 IN)



### BY SEA

2X40' OT  
+ 2X40' OT H=2600

ORUDNK 80/105\_100/130\_120/160\_130/170 - LOGIK B5



### BY ROAD

4 STANDARD TRUCKS  
(13.60 M / 44 FT - 6 IN)



### BY SEA

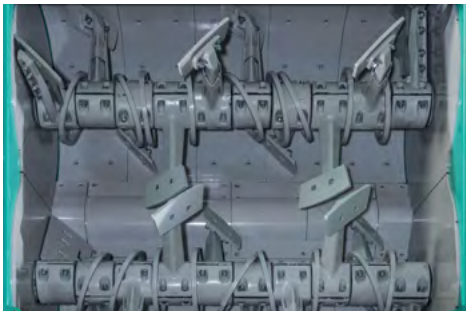
3X40' OT  
+ 2X40' OT H=2600

## TECHNICAL CHARACTERISTICS - (Standard)

		ORUDNK 80 / 105	ORUDNK 100 / 130	ORUDNK 120 / 160	ORUDNK 130 / 170
Hourly production	m <sup>3</sup> /h / yd <sup>3</sup> /h	80 / 105	100 / 130	120 / 160	130 / 170
Batch capacity (vibrated concrete)	m <sup>3</sup> / yd <sup>3</sup>	2 / 2.50	2.5 / 3.35	3 / 4	3.35 / 4.50
Power required	kW / hp	105 / 140	140 / 188	162 / 217	180 / 241
Twin shaft mixer	mod	ORUMD 3000/2000	ORUMD 3750/2500	ORUMD 4500/3000	ORUMD 5000/3350
Loading conveyor belt (length)	m / ft	15 / 49	15 / 49	15 / 49	15 / 49
Loading conveyor belt (width)	m / ft	0.8 / 2.6	1 / 3.3	1 / 3.3	1 / 3.3
Cement weighing hopper	l / yd <sup>3</sup>	1400 / 1.83	1400 / 1.83	1900 / 2.48	1900 / 2.48
Water weighing hopper	l / gal	600 / 158	1000 / 264	1000 / 264	1000 / 264
Weighing system (approved-Type)	mod	by load cells	by load cells	by load cells	by load cells
Aggregates storage (capacity)	m <sup>3</sup> / yd <sup>3</sup>	80 - 120 / 105 - 157	80 - 120 / 105 - 157	80 - 120 / 105 - 157	80 - 120 / 105 - 157
Management unit	mod	HPS 2100V	HPS 2100V	HPS 2100V	HPS 2100V

# HORIZONTAL TWIN SHAFT MIXER

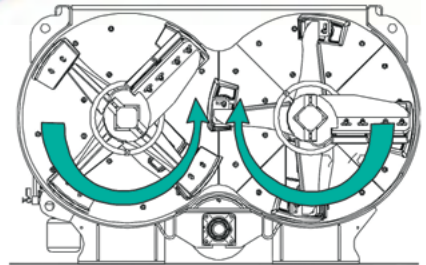
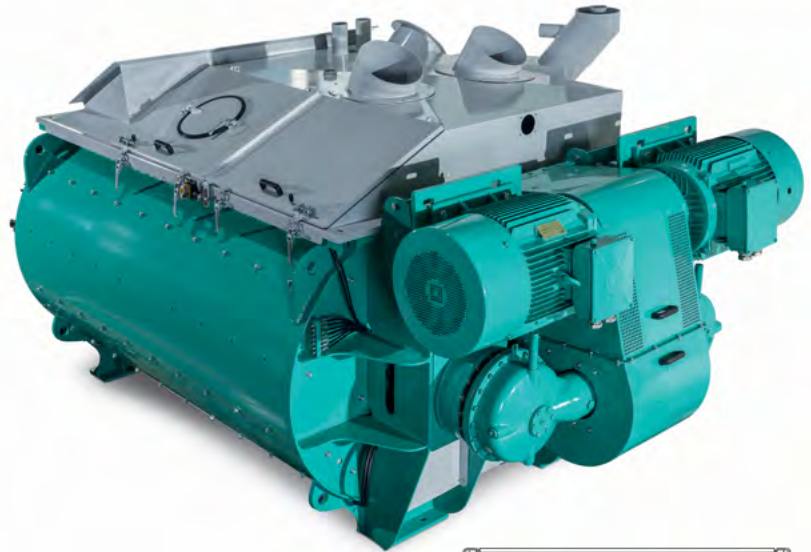
ORU MD 3000/2000 / 3750/2500 / 4500/3000 /



High capacity mixing bin



Automatic lubrication system equipped with 4 programmable and independent pumps



Synchronized and alternating mixing axis rotation

## MIXER TECHNICAL DATA

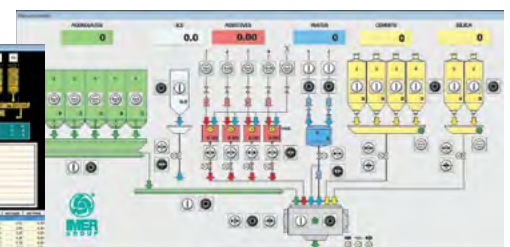
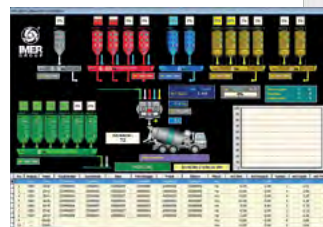
		3000/2000	3750/2500	4500/3000	5000/3350
Load capacity	l / yd <sup>3</sup>	3000 / <b>4.00</b>	3750 / <b>5.00</b>	4500 / <b>6.00</b>	5000 / <b>6.50</b>
Load capacity	Kg / lb	4740 / <b>10472</b>	5930 / <b>13073</b>	7100 / <b>15653</b>	7900 / <b>17416</b>
Vibrated yield	l / yd <sup>3</sup>	2000 / <b>2.50</b>	2500 / <b>3.35</b>	3000 / <b>4.00</b>	3350 / <b>4.50</b>
Cycle time	sec.	<b>55</b>	<b>60</b>	<b>65</b>	<b>70</b>
Max inert size	mm / in	0-150 / <b>0-6</b>	0-150 / <b>0-6</b>	0-150 / <b>0-6</b>	0-150 / <b>0-6</b>
Mixing power	kW / hp	2x37 / <b>2x50</b>	2x45 / <b>2x60</b>	2x55 / <b>2x74</b>	2x65 / <b>2x80</b>
Mixing blades	no.	<b>12</b>	<b>16</b>	<b>20</b>	<b>20</b>
Oil hydraulic unit	kW / hp	1.5 / <b>2.0</b>	1.5 / <b>2.0</b>	2.2 / <b>2.9</b>	2.2 / <b>2.9</b>
Skip load capacity	l / yd <sup>3</sup>	3000 / <b>4.0</b>	3750 / <b>5.0</b>	4500 / <b>6.00</b>	5000 / <b>6.50</b>
Standard skip speed	m/min / ft/	35 / <b>115</b>	35 / <b>115</b>	37 / <b>122</b>	37 / <b>122</b>
Standard skip speed	kW / hp	30 / <b>40</b>	37 / <b>50</b>	45 / <b>60</b>	55 / <b>74</b>
Weight	Kg / lb	7100 / <b>15650</b>	8200 / <b>18075</b>	9300 / <b>20500</b>	9500 / <b>20945</b>

## MAIN OPTIONAL ACCESSORIES

- 600 HB WEAR-PROOF CAST IRON ALLOY INTERNAL LINING
- THICKER BLADES AND VERTICAL PANELS
- AUTOMATIC HIGH PRESSURE CLEANING SYSTEM
- CONFIGURATIONS FOR EXTREME WEATHER CONDITIONS

## HPS 2100-V MANAGEMENT AND CONTROL

HPS 2100-V is a customized and automated software solution for the most advanced concrete pre-packaging processes. The user-friendly interface makes the system extremely simple to use. The basic hardware configuration includes a personal computer with an LCD monitor as well as the peripheral devices needed to store and enter data. Real-time operation is ensured by the PLC.

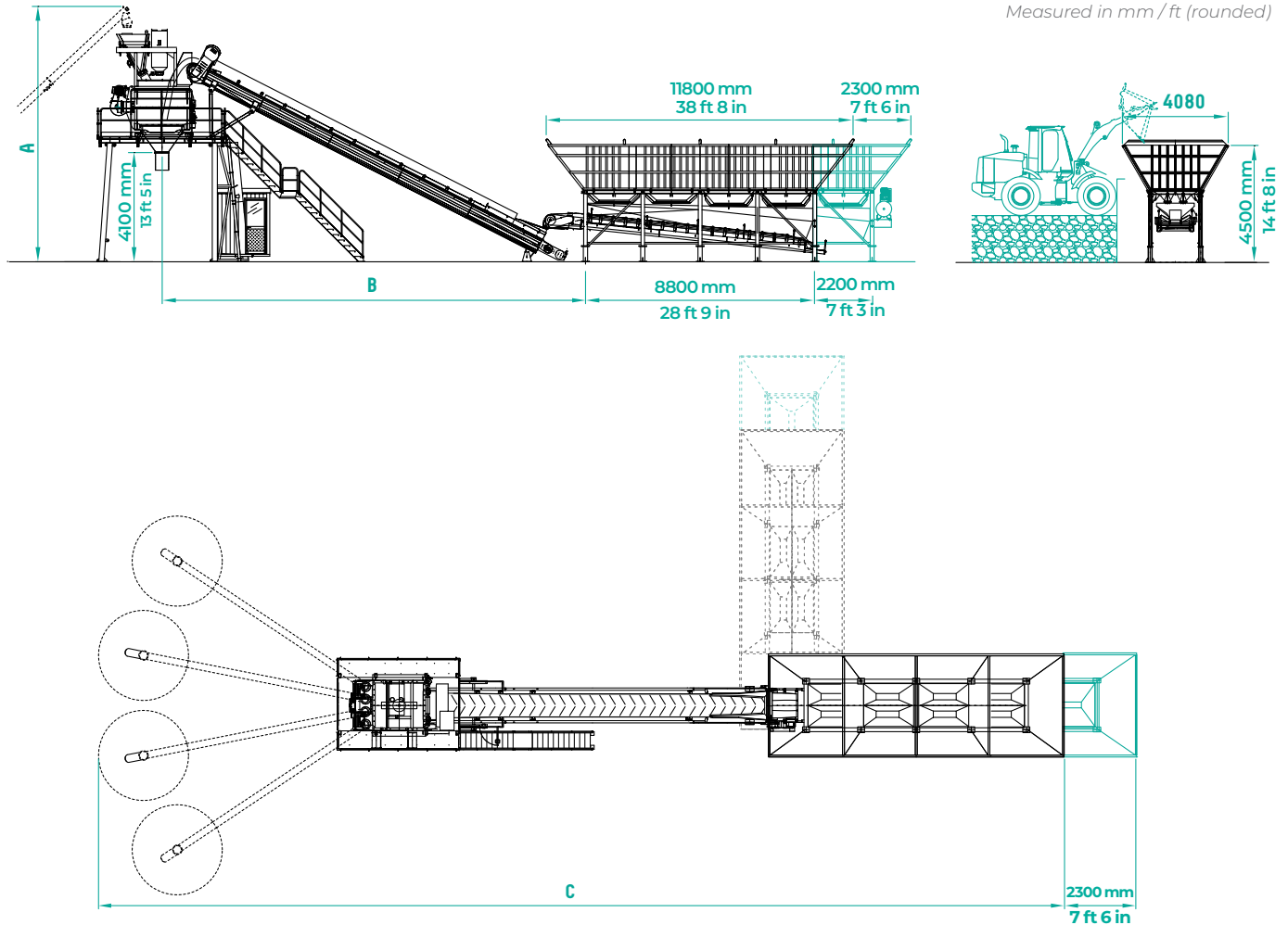




# ORUDNK 80/105\_100/130\_120/160\_130/170 L WITH CHEVRON CONVEYOR BELT

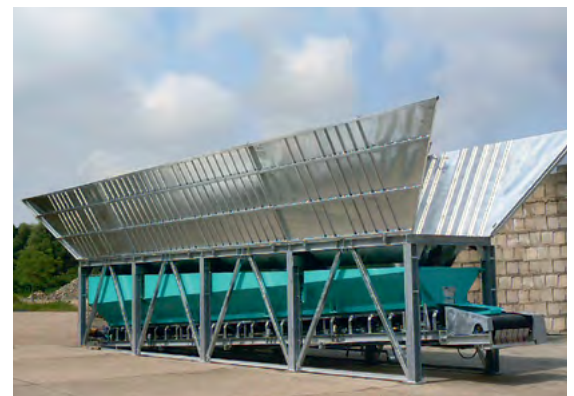
	ORUDNK 80 / 105	ORUDNK 100 / 130	ORUDNK 120 / 160	ORUDNK 130 / 170
A	9800 mm / 32 ft	9800 mm / 32 ft	10300 mm / 34 ft	13000 mm / 43 ft
B	16250 mm / 53 ft	16250 mm / 53 ft	16350 mm / 54 ft	16350 mm / 54 ft
C	38700 mm / 127 ft	38700 mm / 127 ft	39500 mm / 130 ft	39500 mm / 130 ft

Measured in mm / ft (rounded)



## ORU LOGIK L4-L5 AGGREGATE STORAGE UNITS

- MODULAR AND HIGH PERFORMANCE
- HEAT GALVANIZED BINS AND FRAME WITH LARGE WIDTH AT LOADING POINT
- MAXIMUM STORAGE CAPACITY AND LOW LOADING POINT
- LONGITUDINAL PANELS WITH HIGH INCLINATION AND VERTICAL DIVIDERS
- DISCHARGE CONES AND AGGREGATE SCALE BINS LINED WITH INTERCHANGEABLE CONSUMABLE ELEMENTS

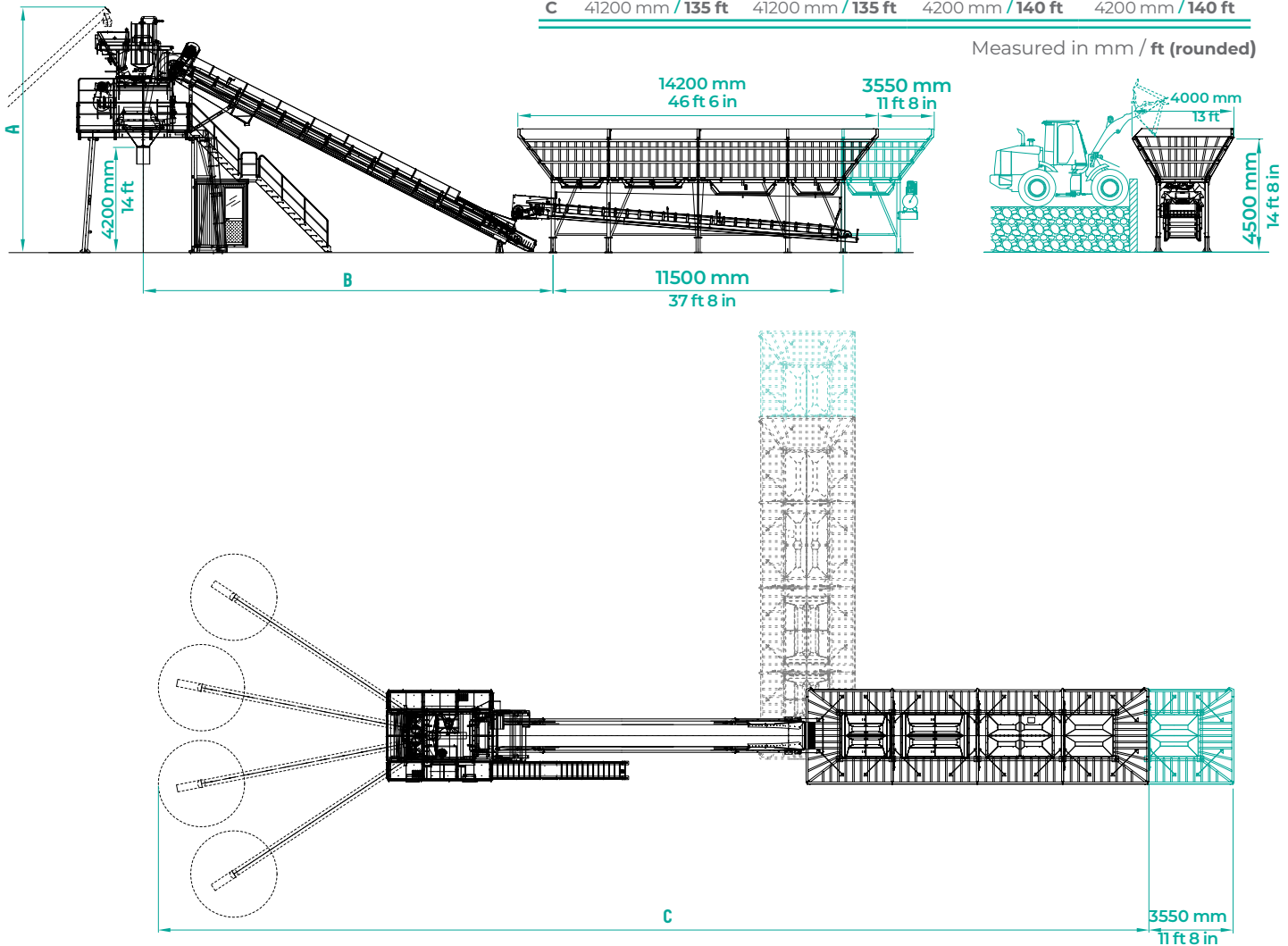


LOGIK WL4 storage unit in assembly phase

# ORUDNK 80/105\_100/130\_120/160\_130/170 B WITH CHEVRON CONVEYOR BELT

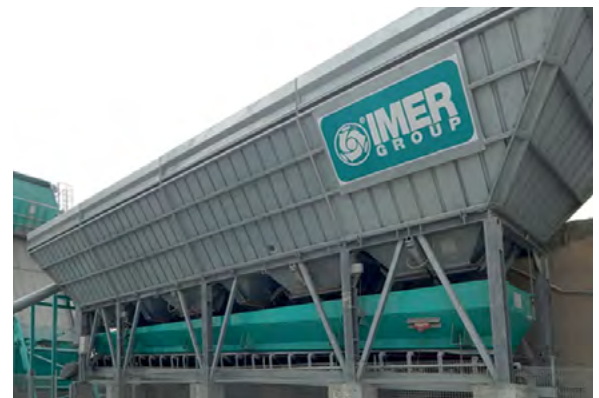
	ORUDNK 80 / 105	ORUDNK 100 / 130	ORUDNK 120 / 160	ORUDNK 130 / 170
A	9800 mm / 32 ft	9800 mm / 32 ft	10300 mm / 34 ft	13000 mm / 43 ft
B	16250 mm / 53 ft	16250 mm / 53 ft	16350 mm / 54 ft	16350 mm / 54 ft
C	41200 mm / 135 ft	41200 mm / 135 ft	4200 mm / 140 ft	4200 mm / 140 ft

Measured in mm / ft (rounded)



## ORU LOGIK B4-B5 AGGREGATE STORAGE UNITS

- MODULAR AND HIGH PERFORMANCE
- HEAT GALVANIZED BINS AND FRAME WITH LARGE WIDTH AT LOADING POINT
- MAXIMUM STORAGE CAPACITY AND LOW LOADING POINT
- LONGITUDINAL PANELS WITH HIGH INCLINATION AND VERTICAL DIVIDERS
- DISCHARGE CONES AND AGGREGATE SCALE BINS LINED



LOGIK WB4 storage unit

# IMER CONCRETE SOLUTIONS

We make solutions for the production, transport and pouring of concrete. A wide range divided into four lines: ReadyMix (batching plants for producing ready-mixed concrete), MixOnSite (batching plants with radius lift arm for construction sites), Precast (precast plants and systems) and Truck Mixers.

The division's engineering staff can offer both standard products and customized technical solutions.

IMER Concrete's personnel have a high level of know-how, which ensures that they are masters of all company processes, from design to post-sales assistance.

We want to be specialists in concrete machinery for all sectors in which concrete is used.



## TRUCK MIXERS



## READY MIX



## PRECAST



## MIX ON SITE



TOLL FREE: **800.275.5463**  
**WWW.IMERUSA.COM**



**IMER USA**  
 423 Bank Street, Suite 180  
 Southlake, TX 76092  
 Tel. (800) 275-5463 - Fax (301) 336-6687  
 www.imerusa.com



IMER Group | USA (IMER USA, Inc) reserves the right to change the information contained herein without prior notice when considered justified. The data and dimensions are not to be considered as binding. The illustrations may include accessories and could be slightly different from the standard versions of the equipment.

© Copyright by IMER Group | USA